

New Hampshire Traffic Update

- Covid – Recovery
- Traffic Monitoring System Reset
- HSIP Safety Counts



Covid Update

Categories

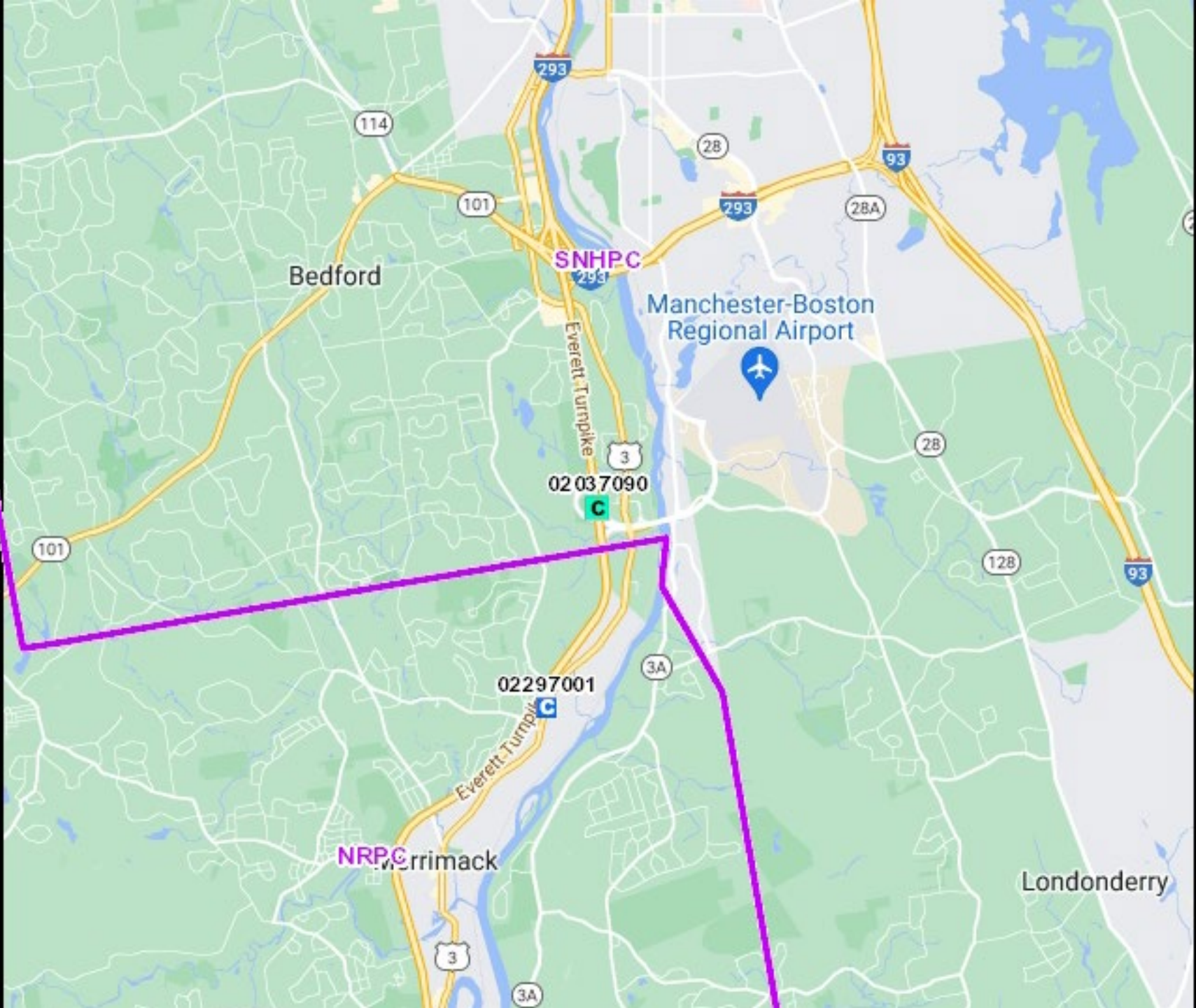
Functional Class

- Freeway & Expressways – Count Station 02037090
- Other Principal Arterials – Count Station 02217001
- Minor Arterial – Count Station 02297001

Comparisons – 2019 to 2022 - January 1 to May 31

- Monthly
- Daily
- Hourly

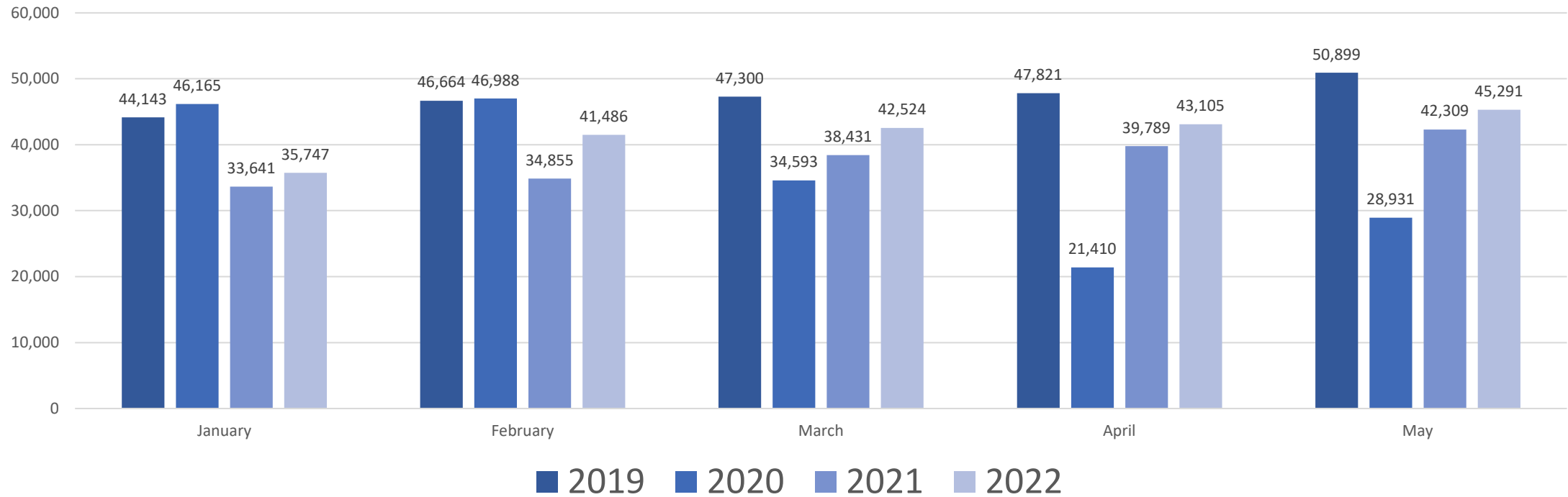
Freeway &
Expressway
02037090



Freeway & Expressway - Monthly

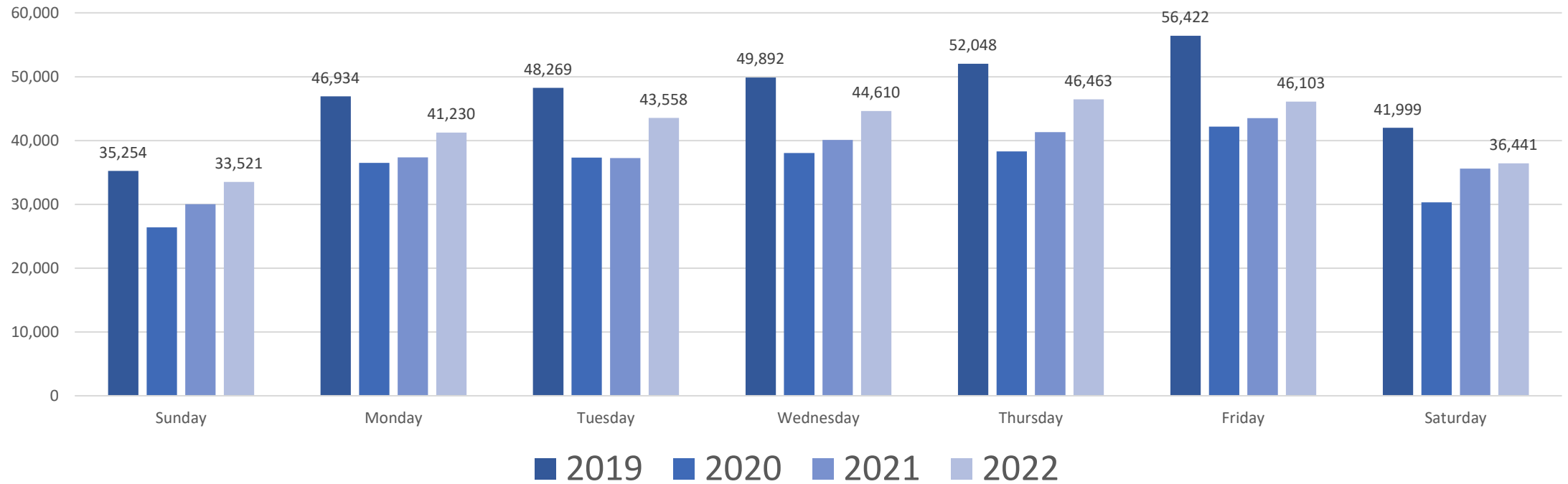
Monthly Average ADT

January 1 - May 31



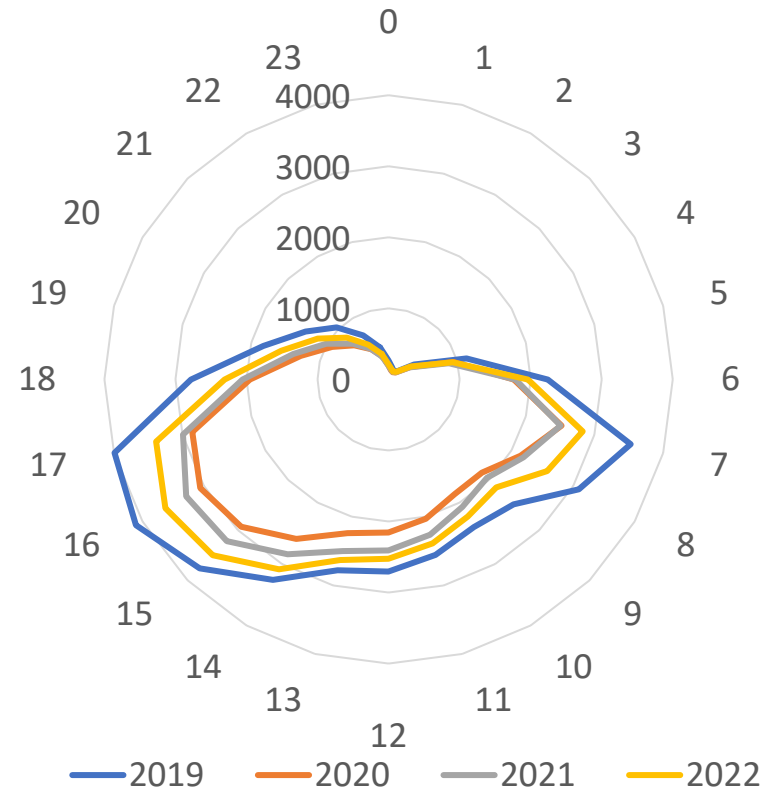
Freeway & Expressway – Day of Week

Average Daily ADT
January 1 - May 31

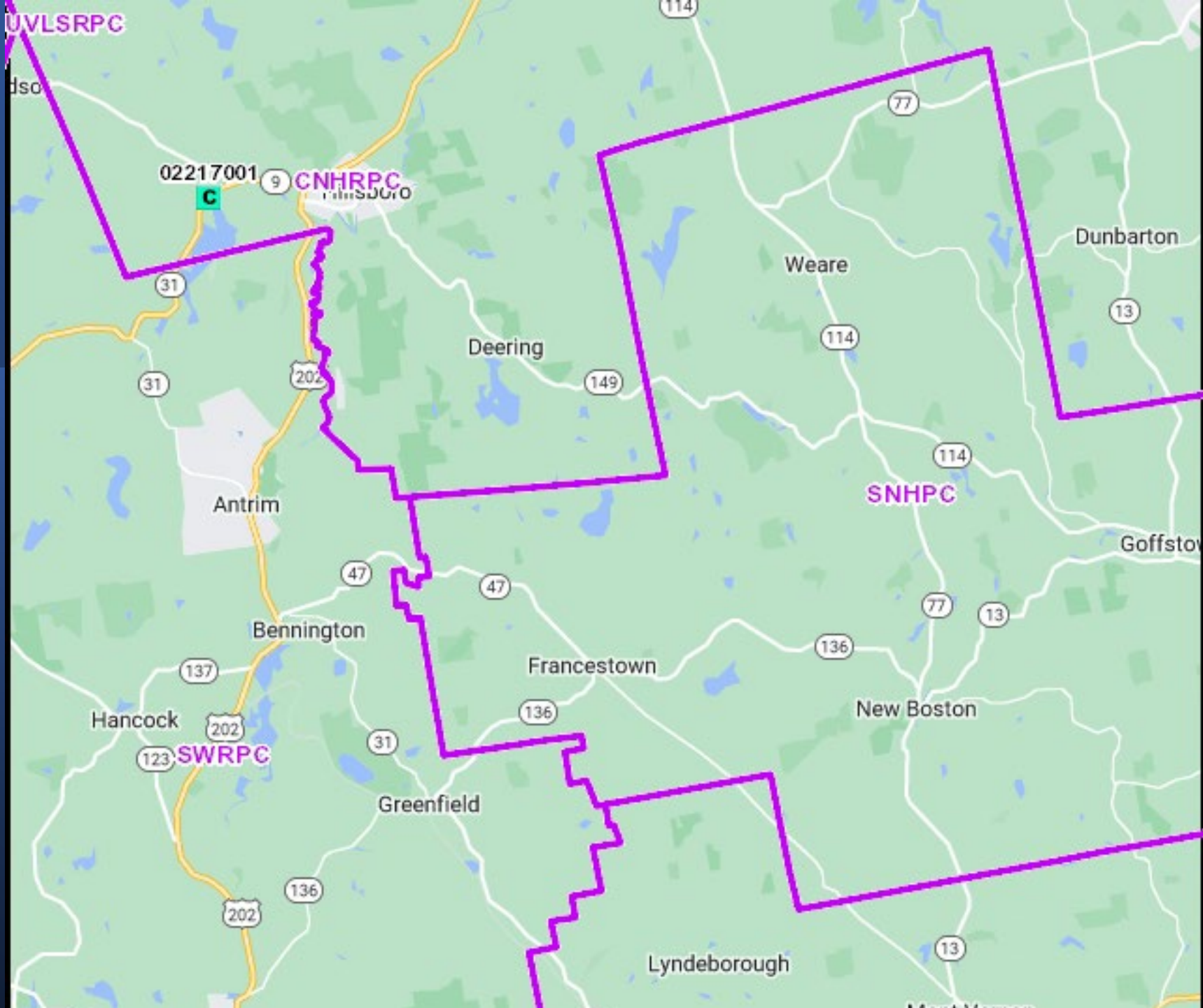


Freeway & Expressway – Hourly Distribution

Average Hourly Distribution
January 1 - May 31
(Vehicle - Hour)

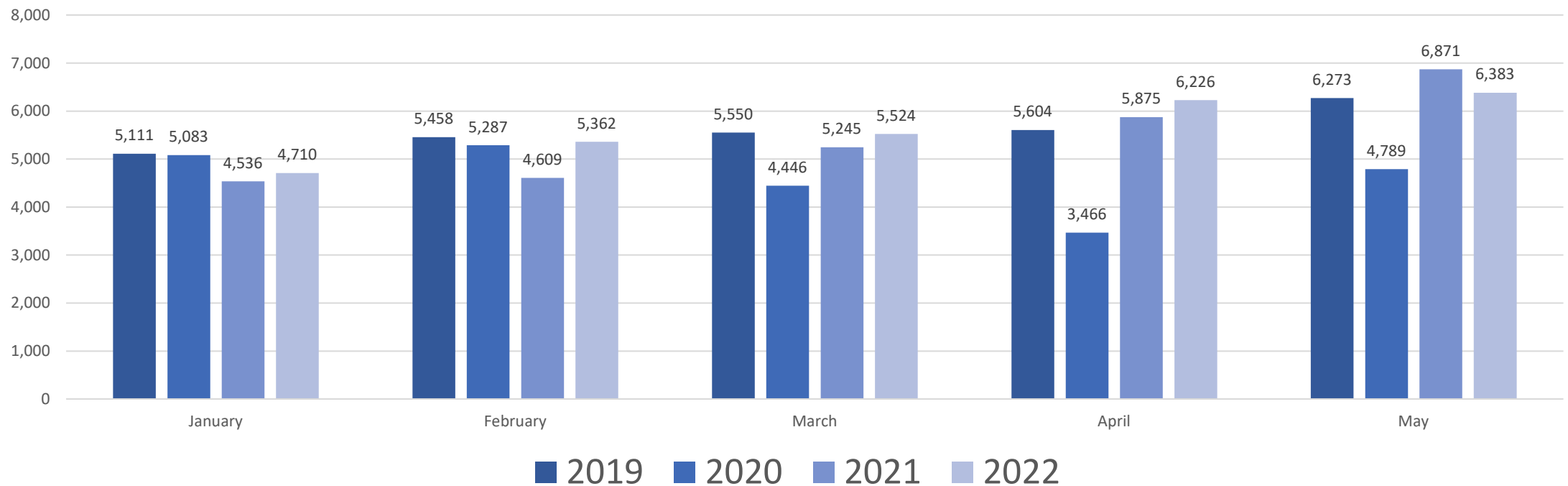


Other
Principal
Arterial
02217001



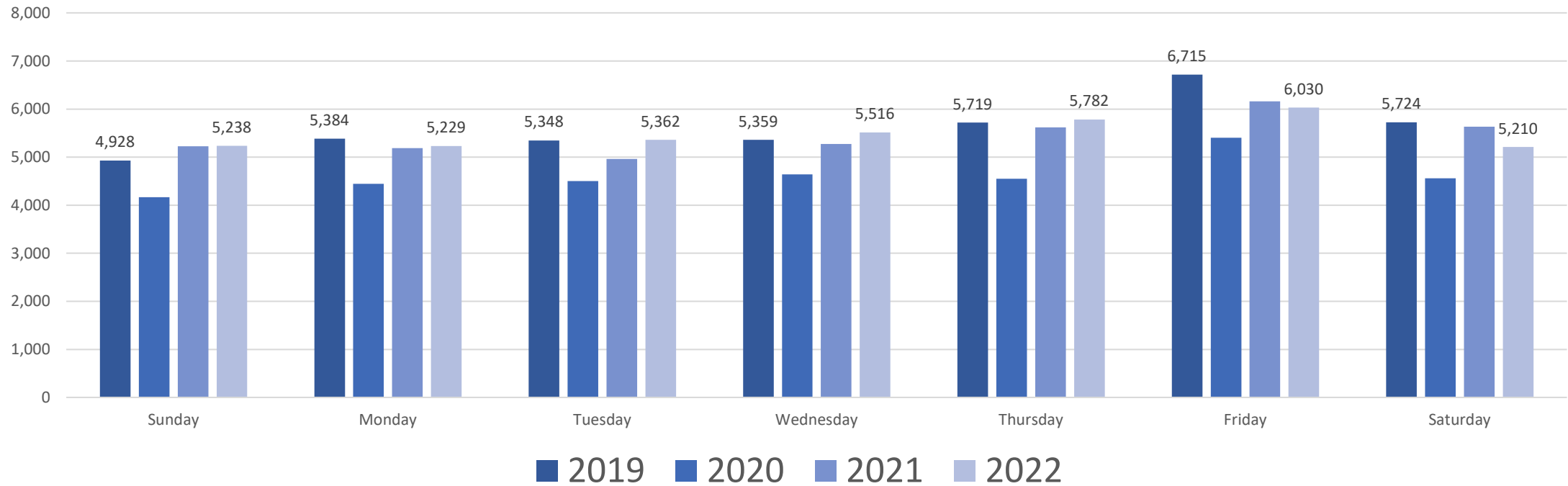
Other Principal Arterial - Monthly

Monthly Average ADT
January 1 - May 31



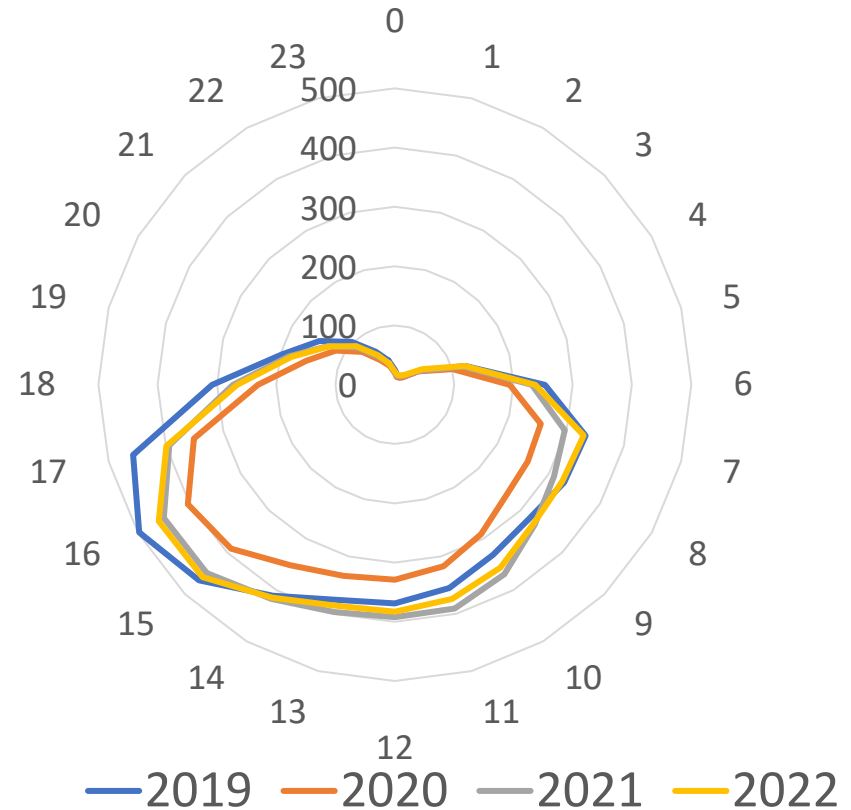
Other Principal Arterial – Day of Week

Average Daily Traffic
January 1 - May 31

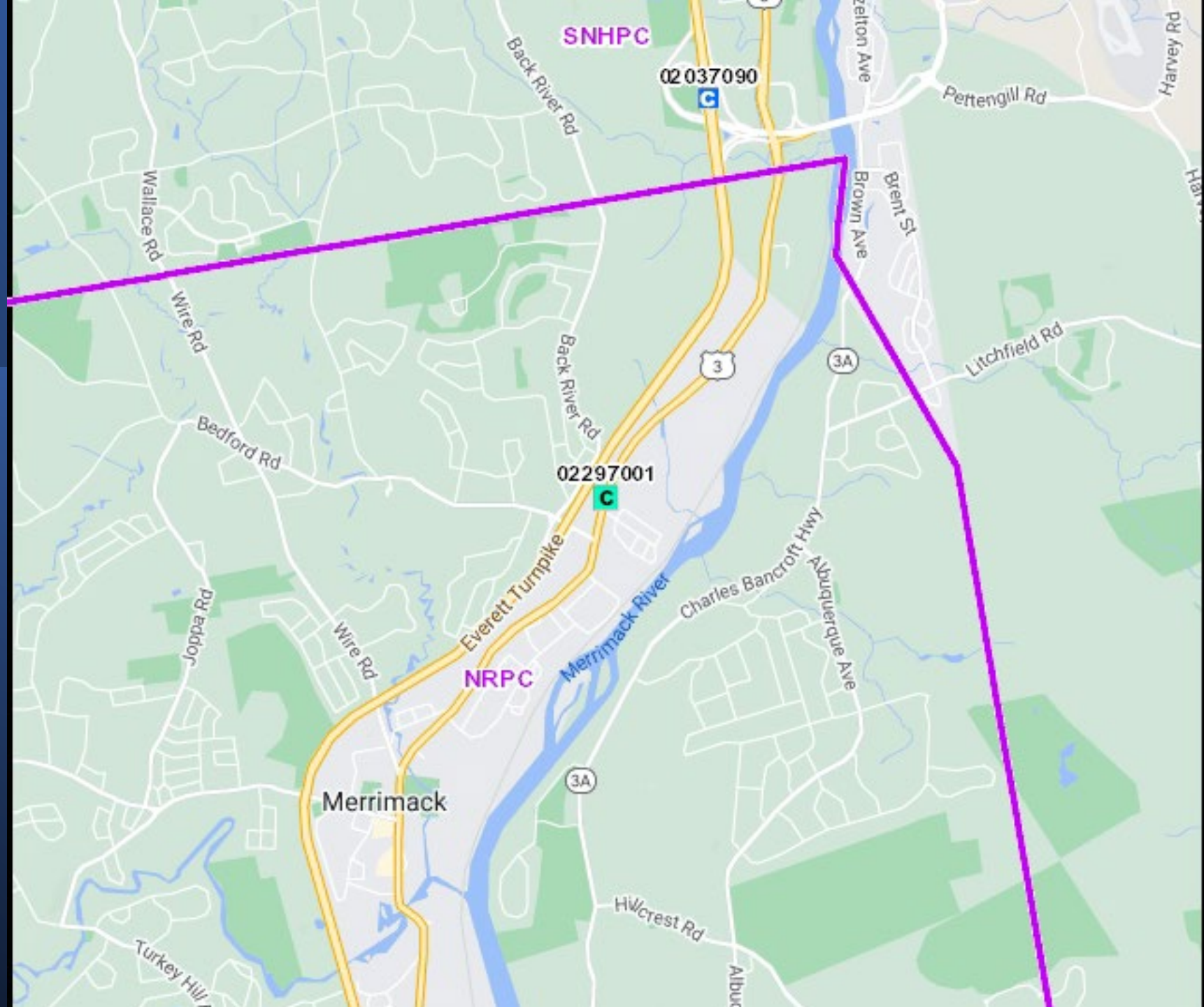


Other Principal Arterial – Hourly Distribution

Average Hourly Distribution
January 1 - May 31
(Vehicle - Hour)

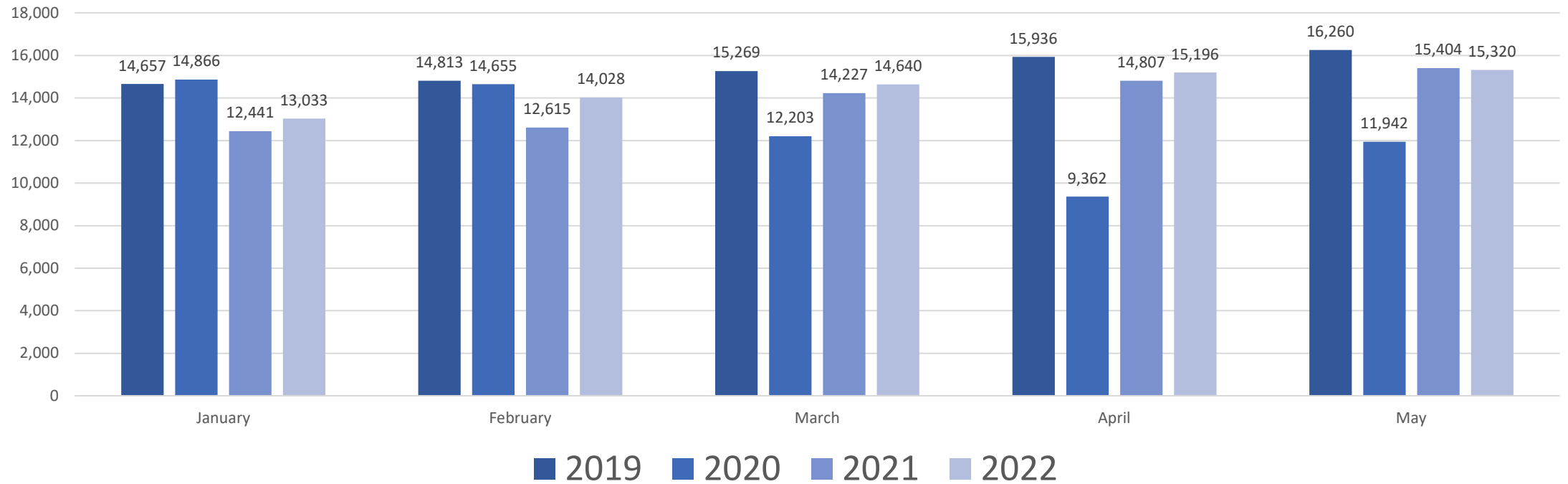


Minor
Arterial
02297001



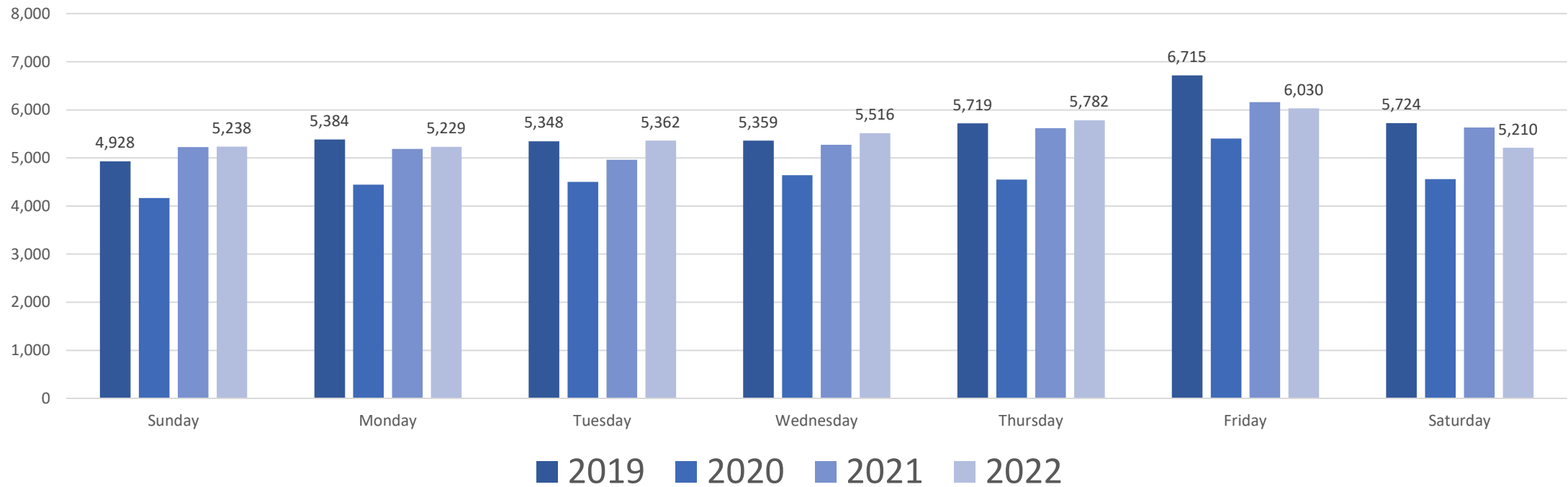
Minor Arterial - Monthly

Monthly Average ADT
January 1 - May 31



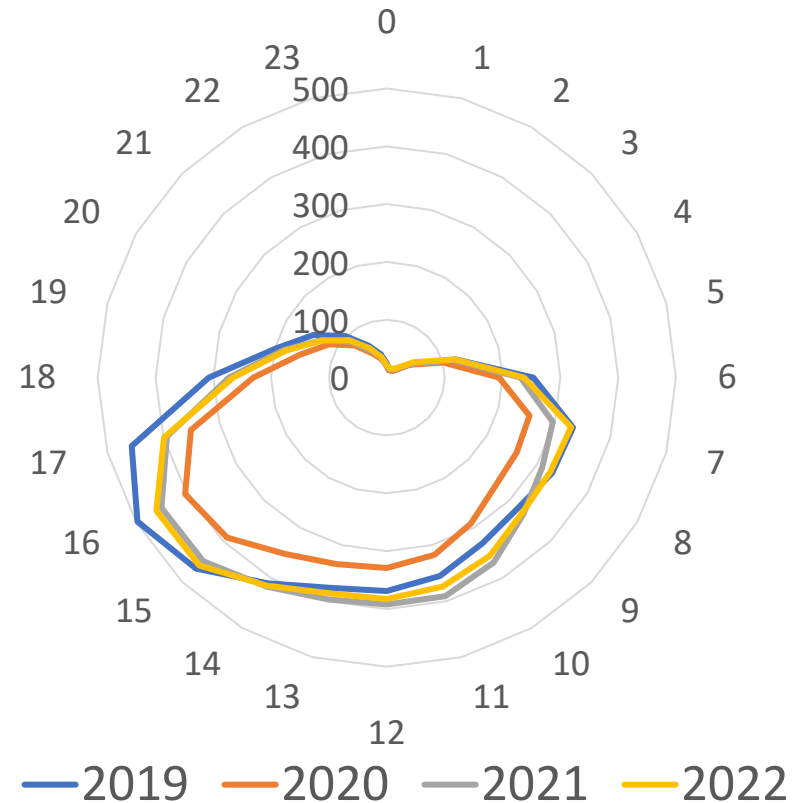
Minor Arterial – Day of Week

Average Daily ADT
January 1 - May 31

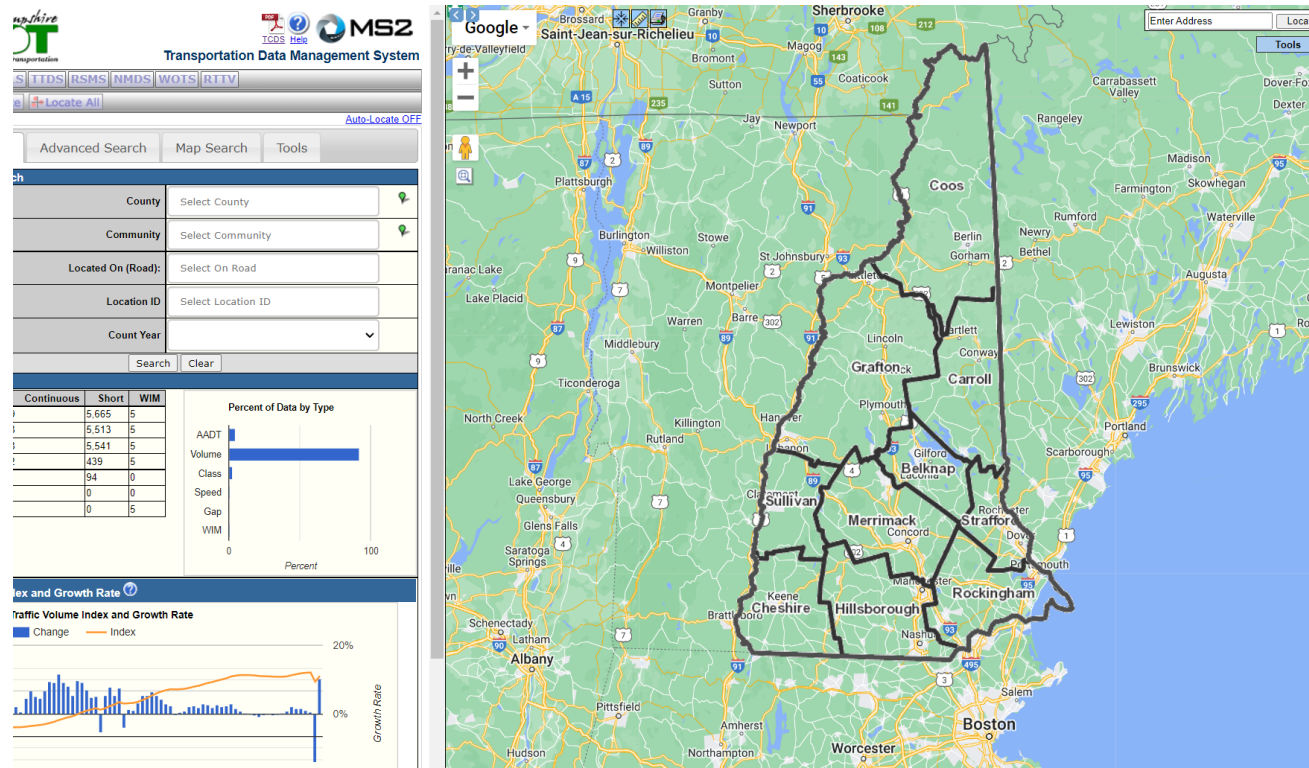


Minor Arterial – Hourly Distribution

Average Hourly Distribution
January 1 - May 31
(Vehicle-Hour)



Traffic Data Management System



- <https://nhdot.public.ms2soft.com/tcds/tsearch.asp?loc=Nhdot&mod=TCDS>

Traffic Monitoring System - Reset

Traffic Volume

- Continuous Counts Sites ~ 60
- Short Counts Sites ~ 6000

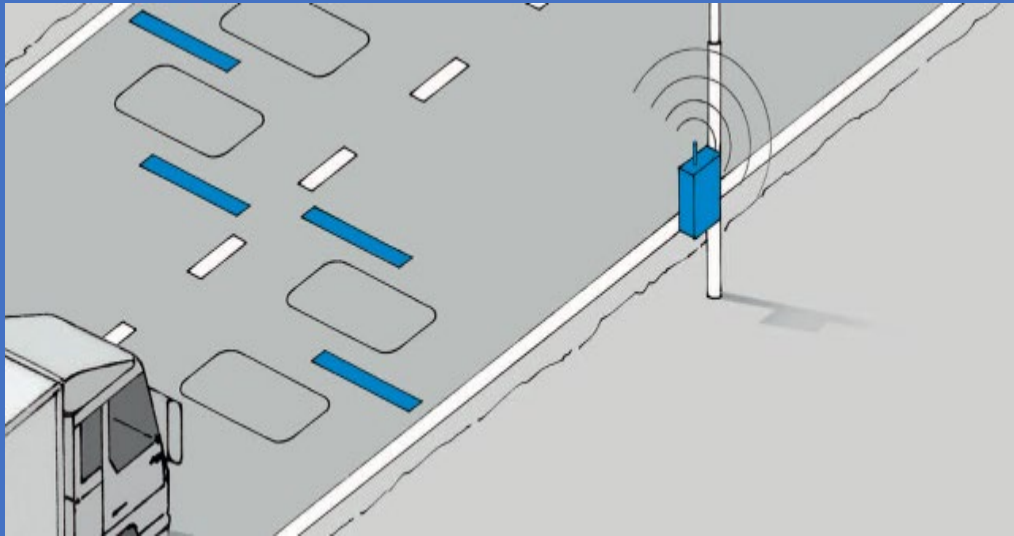
Weigh in Motion

- Reset
 - Five Locations

Vehicle Classification

- Reset
 - 24 Locations
- Additional Short Counts

Weigh In Motion WIM



Town	Route
Concord	I393
Hampton Falls	I95
Rochester	NH16
Manchester	I93
Hopkinton	I89

Vehicle Classification

Twenty – Four Locations

- Convert traffic count locations to:
 - Class
 - Speed
 - Volume
- Site selection based on:
 - Functional Class
 - Factors – Growth
 - Highest Volume
 - Geographic Regions

Traffic Monitoring Technologies

Vehicle Classification

- Inductive Loop Signature
 - <https://www.vsign.io/>



Traffic Monitoring Technologies

Vehicle Classification

- AI Video Collection

All Public Roads Traffic Volume



Highway Safety
Improvement
Program (HSIP)

Model Inventory of
Roadway Elements
(MIRE)

Required to be
available – 2026



AADT “all paved Roadway
Segments”



Traffic Volume collection on
public roads is HSIP eligible

Traffic Research Section

G. Stuart Thompson, PE

Traffic Research Engineer

Gordon.S.Thompson@dot.nh.gov

(603) 271-0390